



# Sonoma Water

Clean. Reliable. Essential. Every Day.

## Flood Zone 1A

SONOMA WATER: STREAM MAINTENANCE  
PROGRAM UPDATE 2023

Chase Takajo  
12/12/23

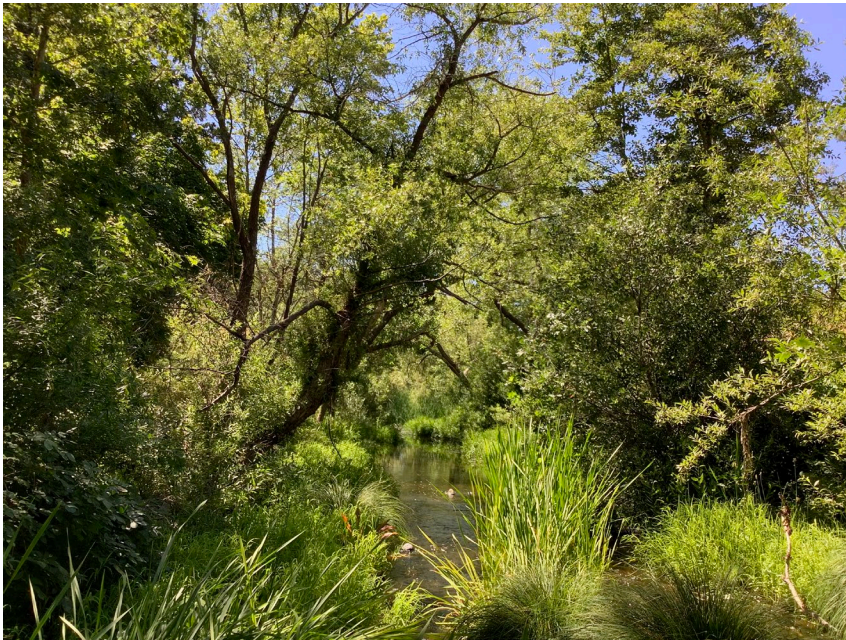


# Vegetation Management

- Abramson Creek
- Austin Creek
- Bellvue Wilfred Creek
- Brush Creek
- Colgan Creek
- College Creek
- Cook Creek
- Copeland Creek
- Crane Creek
- Fountain Grove Creek
- Gossage Creek
- Hinebaugh Creek
- Irwin Creek
- Jensen Creek
- Kawana Springs Creek
- Laguna de Santa Rosa
- Lorna Dell Creek
- Oakmont Creek
- Paulin Creek
- Piner Creek
- Roseland Creek
- Santa Rosa Creek
- Spring Creek
- Spring Creek Diversion
- Santa Rosa Creek Reservoir
- Todd Creek
- Windsor Creek
- ***Total 2,292 Cubic Yards of Material***



# Santa Rosa Creek



# Gossage Creek



# Debris and Trash Removal



---

Security Guard Patrolling  
Channels

---

Weekly Clean ups

---

Daily coordination with City of  
Santa Rosa and Rohnert  
Park

---

73,980lbs of Trash Removed



# Sediment Removal

- Cook Creek: Sediment Basin
  - 1360CY
- Copeland Creek- Sediment Basins
  - At Snyder Ln: 1,872 CY
  - At Jasmine Cir: 824 CY
- Colgan Creek- Reach Scale
  - Llano Rd to Todd Rd
  - 18,585 CY
- Colgan Creek-Localized
  - Downstream of Corby Ave
  - 584 Cy
- Crane Creek-Localized
  - 2,392 CY
- Iwrin Creek- Sediment Basin
  - At Fulton Rd
  - 80 Cy
- Kawana Springs Creek- Sediment Basin
  - Behind Santa Rosa Costco
  - 419 CY
- Santa Rosa Creek Diversion- Sediment Basin
  - In the Diversion Structure
    - 976 Cy
  - Downstream of Structure
    - 640 CY
- Fountain Grove Creek-Sediment Basin
  - 296 CY



# Colgan Creek at Corby Ave



# Colgan Creek: Credit Trading Project



Sonoma  
Water



# Crane Creek



# Santa Rosa Creek Diversion: Fish Ladder



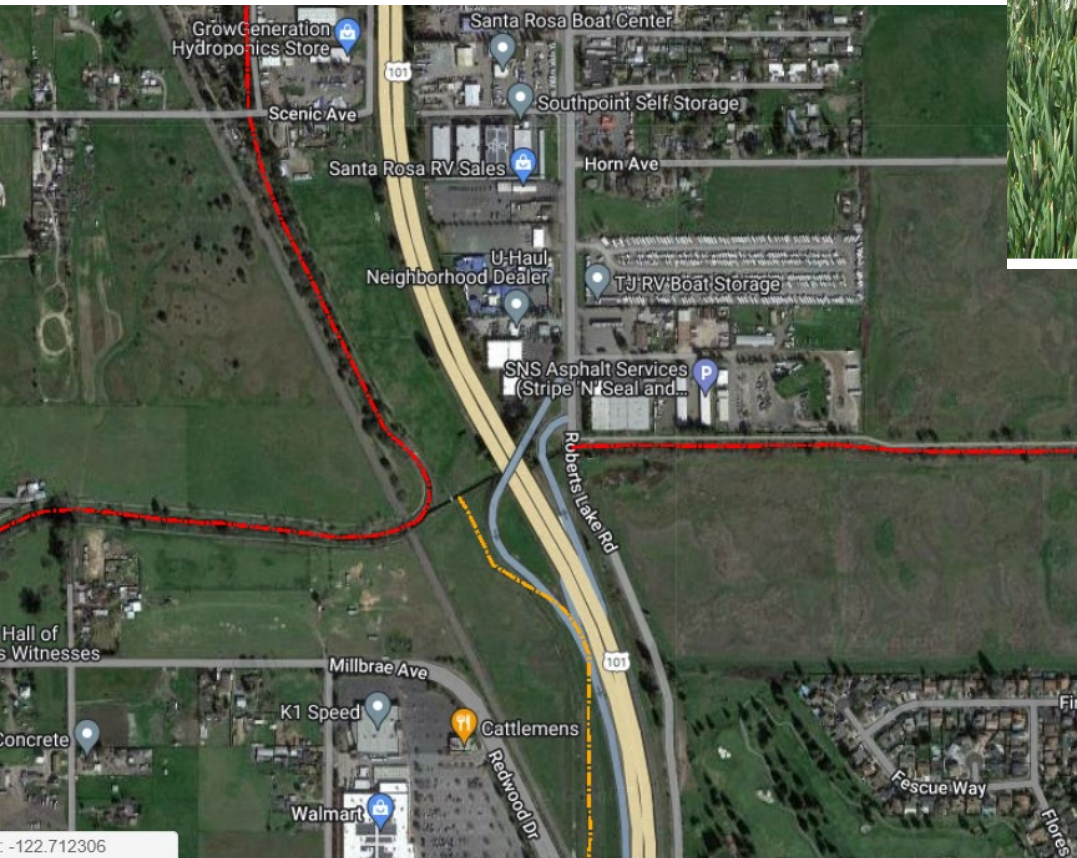
Sonoma  
Water

# Upcoming Projects

- Todd Creek
  - Failed Concrete Walls
  - 400k in FY 24/25 for Design
  - 2 million in FY 25/26 for Construction



PHOTO 2: Wall 1 Failed Concrete Panel

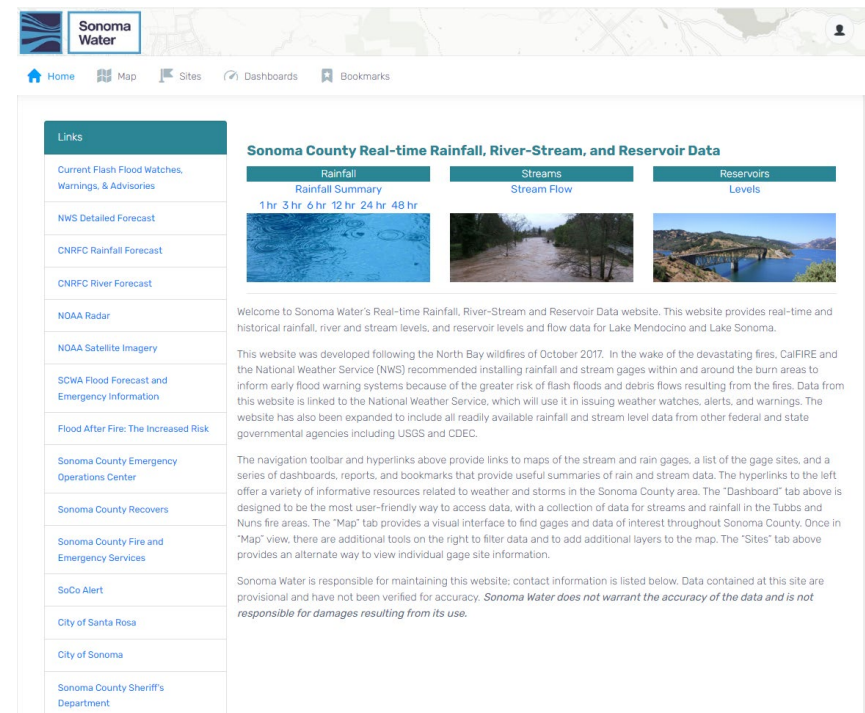


# Upcoming Projects

- Cultural Resource Monitoring Plan for SMP
  - BMP implementation
  - On Site Monitors
  - Request for Proposals have gone out
    - Review and interview consultants

# Sonoma OneRain System

- OneRain
  - Sonoma.onerain.com
  - Real time rainfall, river-stream and reservoir data



The screenshot displays the Sonoma Water OneRain System website. The header includes the Sonoma Water logo and navigation links for Home, Map, Sites, Dashboards, and Bookmarks. A left sidebar titled "Links" contains a list of resources such as "Current Flash Flood Watches, Warnings, & Advisories", "NWS Detailed Forecast", "CNRFC Rainfall Forecast", "CNRFC River Forecast", "NOAA Radar", "NOAA Satellite Imagery", "SCWA Flood Forecast and Emergency Information", "Flood After Fire: The Increased Risk", "Sonoma County Emergency Operations Center", "Sonoma County Recovers", "Sonoma County Fire and Emergency Services", "SoCo Alert", "City of Santa Rosa", "City of Sonoma", and "Sonoma County Sheriff's Department". The main content area is titled "Sonoma County Real-time Rainfall, River-Stream, and Reservoir Data" and features three columns: "Rainfall" (with a "Rainfall Summary" and time filters for 1 hr, 3 hr, 6 hr, 12 hr, 24 hr, and 48 hr), "Streams" (with a "Stream Flow" image), and "Reservoirs" (with a "Reservoirs Levels" image). Below these columns, there is a welcome message and a disclaimer: "Sonoma Water is responsible for maintaining this website; contact information is listed below. Data contained at this site are provisional and have not been verified for accuracy. Sonoma Water does not warrant the accuracy of the data and is not responsible for damages resulting from its use."

# Questions?



Sonoma  
Water